

Evidence for a Solar Flare Cause of the Pleistocene Mass Extinction

Paul A. LaViolette

February 18, 2011

Radiocarbon vol. 53, No. 2 (2011): 303-323.

Abstract. The hypothesis is presented that an abrupt rise in atmospheric radiocarbon concentration evident in the Cariaco Basin varve record at $12,837 \pm 10$ cal yrs BP contemporaneous with the Rancholabrean termination, may have been produced by a super-sized solar proton event (SPE) having a fluence of $\sim 1.3 \times 10^{11}$ protons/cm². A SPE of this magnitude would have been large enough to deliver a lethal radiation dose of at least 3 - 6 Sv to the Earth's surface, and hence could have been a principal cause of the final termination of the Pleistocene megafauna and several genera of smaller mammals and birds. The event time-correlates with a large magnitude acidity spike found at 1708.65 m in the GISP2 Greenland ice record, which is associated with high NO⁻³ ion concentrations and a rapid rise in ¹⁰Be deposition rate, all of which are indicators of a sudden cosmic ray influx. The depletion of nitrate ion within this acidic ice layer suggests that the snowpack surface at that time was exposed to intense UV for a prolonged period which is consistent with a temporary destruction of the polar ozone layer by solar cosmic rays. The acidity event also coincides with a large magnitude, abrupt climatic excursion and is associated with elevated ammonium ion concentrations, an indicator of global fires.

Introduction.

The Late Pleistocene megafaunal extinction ended abruptly about 12,900 years ago. One distinctive feature is its terminal nature wherein extinct species were not replaced with new genera (Martin, 1967). This circumstance contrasts with the rest of the Pleistocene during which there was a more or less orderly replacement of the old by new genera. Guilday (1967) compares this terminal event with the extinction of the dinosaurs at the end of the Cretaceous. Both events involved differential extinctions, large land animals (greater than 25–50 kg adult body weight) being primarily affected with the smaller vertebrates and the plant kingdom being relatively unaffected.

The cause of the Pleistocene mass extinction has for a long time been a mystery. Martin (1967) had proposed that, in North America, it was caused by the arrival of paleolithic hunters immigrating via a land bridge that connected North America with Siberia during the ice age. However, this overkill hypothesis does not explain why the extinction took place also in Europe and Siberia. It also does not account for the simultaneous disappearance of 10 genera of birds (Grayson, 1977) nor for the demise of many relatively young, tender mammoths in the San Pedro valley without any sign of Clovis impact (Haynes, 2006).

Others such as Vereshchagin (1967), Slaughter (1967), and Guilday (1967) have offered the alternative explanation that the disappearance could be attributed to the changes in climate that took place near the end of the ice age. However, Edwards (1967) points out that climatic change could not have accounted for these extinctions since abrupt changes have occurred in a cyclic manner throughout the Pleistocene without having any particularly pronounced effects on animal life. Also Mehringer (1967) points out that there were no major barriers to migration into favorable habitats that might account for the extinction.

More recently, Firestone et al. (2006, 2007) report that an approximately 5 cm thick sediment layer overlying the termination boundary for the extinct Pleistocene megafauna as well as the Clovis PaleoIndian occupational surface, and which they term the "YDB layer," contains high concentrations of extraterrestrial (ET) material indicators such as magnetic microspheres, iridium, nickel, nanodiamonds, and helium-rich fullerenes. This led them to suggest that this ET material was deposited by the impact or aerial explosion of one or more large comets (1 - 500 kilometer diameter range) which caused the extinction of the Pleistocene megafauna and triggered a climatic cooling that initiated the YD.

This comet hypothesis, however, faces a number of difficulties. First, no impact crater has been identified. Also Melott et al. (2007) note that a comet of the size proposed by Firestone et al. (2007) should have produced a nitrate signal about 10^5 fold larger than the highest NO_3^- concentrations observed in the GISP2 ice record and that the observed absence of such a large signal effectively rules out the YD comet impact scenario. Ice core nitrate evidence also rules out the alternative scenario proposed by Napier (2010) that the Earth intercepted debris from a short-period comet resulting in $\sim 10^4$ Tunguska-like impacts. Such a meteor storm would have produced a total nitrate signal over 10^3 fold greater than the largest nitrate peak observed in the YD section of the polar ice record.

The claim that high concentrations of iridium are present in the YDB layer is still a matter of controversy. Beets et al. (2008) have reported discovering extraterrestrial osmium in a Belgian sediment sample close to the AL/YD transition. Also Mahaney et al. (2010) have reported high levels of the platinum group elements (PGEs) ruthenium and rhodium together with glassy carbon spherules and magnetic microspheres in a carbon-rich correlative YD layer in the Venezuelan Andes. In addition, Kurbatov et al. (2010) report finding a 270,000 fold increase in nanodiamond abundance relative to adjacent ice samples which occurs in a 15 cm ice section spanning the first 160 years of the YD. However, other groups, such as Paquay, et al. (2009), Surovell, et al. (2009), and Haynes, et al. (2010), failed to find elevated concentrations of PGEs in YDB sediments using mass spectrometry analysis. Although, Firestone et al. (2010) have contended that the Murray Springs, AZ iridium results of Haynes et al. confirm their earlier ET findings.

Nevertheless, high concentrations of such ET indicators, if present at the YD boundary, do not uniquely imply a cometary impact origin. Fullerenes and nanodiamonds have both been found in carbonaceous chondrites and in interplanetary dust particle aggregates (Rietmeijer, 2006). Also Tian et al. (2011), who found large numbers of nanodiamonds in a black YD boundary layer from Lommel, Belgium, find no evidence that they were formed through a comet impact shock process. Cosmic microspheres also are known to be present in space, being found in the Earth's atmosphere at high altitudes and also on the Moon (Parkin et al., 1977). Also helium-3 is a common component of interplanetary dust particles, being implanted during their exposure in space to the solar wind. So the presence of elevated levels of helium-3 in early YD sediments could just as well be attributed to a sudden influx of a large amount of cosmic dust.

The radiocarbon and cosmogenic beryllium evidence examined here strengthens suggests that the mass extinction had a solar cause. Several studies indicate that toward the end of the ice age the Sun was far more active than it is today. Zook et al. (1977) studied solar flare tracks etched in lunar rock micrometeorite craters and concluded that around 16 kyrs ago the average solar cosmic ray intensity was 50 times higher than at present, declining to 15 times higher by 12 kyrs BP, and eventually reaching the present activity level. Elevated

radiocarbon concentrations found in the surfaces of lunar rocks also indicate that for a period of 5000 years prior to 12 kyrs BP the Moon was being exposed to a solar cosmic ray flux averaging 30 times higher than the present flux (Zook, 1980). Jull et al. (1998a) have measured the concentration of ^{14}C vs. depth in lunar rock 68815 and several lunar cores and found the levels to be elevated, consistent with a 25% elevation of the cosmic ray exposure (solar plus galactic) over the past ~30,000 years.

LaViolette (1983, 1985, 1987, 1990, 2005) attributed this elevated solar activity to the entry of large quantities of dust, gas into the solar system and had proposed that excessively large solar cosmic ray events were a primary cause of the Pleistocene megafaunal extinction. Radiocarbon data from the Cariaco basin ocean sediment record as well as nitrate ion data from the Greenland ice core strengthen this conclusion. They suggest that one or more solar proton events occurring near the beginning of the YD were sufficiently large to have produced radiation levels at the Earth's surface fatal for unprotected mammalian species.

Elevated Solar Activity at the Beginning of the Younger Dryas.

The Cariaco Basin varved ocean sediment record located off the coast of Venezuela shows that radiocarbon abundance excess ($\Delta^{14}\text{C}$) in these sediments underwent a 65 per mille rise relative to the ^{14}C trend line during the first 200 years of the YD, between 12,957 and 12,760 varve yrs BP, synchronous with a 160 year-long climatic cooling between 12,957 to 12,795 varve yrs BP; see figure 1 (Hughen, et al., 2000).^{*} This ^{14}C excess is the largest in the Cariaco Basin record as far back as 15,000 cal yrs BP and is also seen in sedimentary records from various locations around the world. This was preceded by a 30 per mille $\Delta^{14}\text{C}$ rise, which is registered between 13,450 and 13,250 cal yrs BP and which correlates with the onset of the Intra Alleröd Cold Peak (IACP).

Although part of the Cariaco Basin ^{14}C excess is likely due to a climatically induced change in the amount of old carbon present in the western subtropical Atlantic reservoir, a major portion of this excess appears to reflect a real increase in the atmospheric ^{14}C production rate. McManus et al. (2004) have charted changes in $^{231}\text{Pa}/^{230}\text{Th}$ ratio in a core from the Bermuda rise as an indicator of the rate of meridional overturning circulation (MOC) and find that there was a partial decrease in MOC at the onset of the YD cooling. Presuming that a correlation might exist between MOC and ^{14}C , Stocker and Wright (1996) computer simulated the YD $\Delta^{14}\text{C}$ rise but were able to attribute only half of the overall rise to a reduction in MOC. Also Muscheler et al. (2000) used beryllium-10 deposition rates determined from analysis of GISP2 Greenland ice (Finkel and Nishizumi, 1997, Alley, 1997) to model the atmospheric radiocarbon production rate at the end of the ice age. They concluded that the $\Delta^{14}\text{C}$ increase at the onset of the YD is due partly to an increase in the cosmogenic production of atmospheric radiocarbon and partly to a reduction in old carbon entering surface waters due to a reduction in North Atlantic deep water formation.

Strong evidence for possible solar involvement in causing the YD ^{14}C rise may be discerned from a close examination of the Cariaco Basin ^{14}C data. This shows that the rise in ^{14}C concentration at the beginning of the YD was punctuated by several spurts or sudden jumps; see arrows in figure 2-a. In terms of the rate of ^{14}C rise per year, four out of the five large spurts to occur from 14.5 to 11.5 kyrs BP occur at the beginning of the YD. The

^{*} The remainder of the paper will adopt the Cariaco Basin chronology and refer to Cariaco Basin varve years as calendar years (cal yrs).

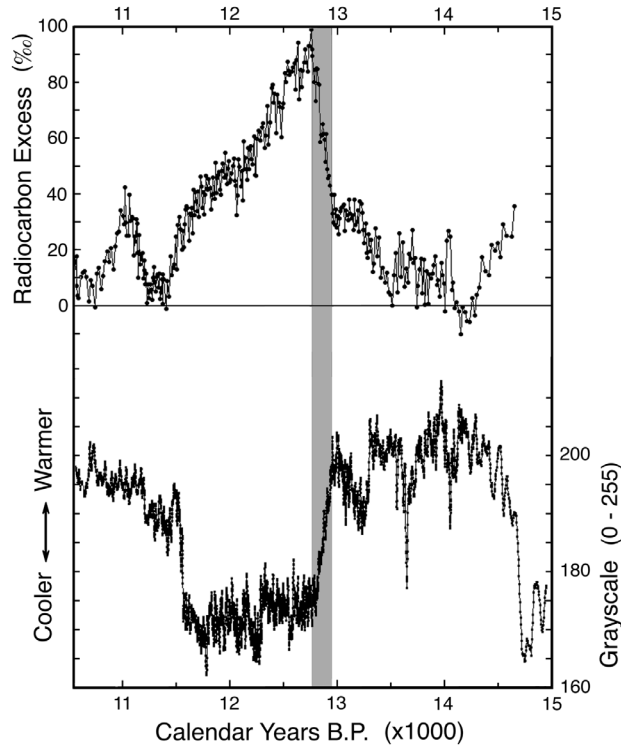


Figure 1. Radiocarbon abundance excess relative to the trend line value for the Cariaco Basin sediment core (upper profile) compared to the core's grayscale climate profile (lower profile). Higher grayscale values indicate warmer temperatures. Data is from Hughen, et al.(2000).

Cariaco Basin varve chronology dates them at $12,973 \pm 10$, $12,904 \pm 10$, $12,837 \pm 10$, and $12,639 \pm 10$ cal yrs BP. It is worth noting that they are spaced from one another by multiples of the Hale solar cycle period of 22.2 ± 2 years, that is, by 69 ± 9 , 67 ± 9 , and 198 ± 9 years, or three and nine Hale cycles (~ 67 years and ~ 200 years). The error assigned to the relative placement of these peaks mainly reflects the fact that each ^{14}C sample is an average of 8 to 12 years in the Cariaco Basin varve record. The finding that the timing of these events conforms to the solar cycle period favors the interpretation that these spurts reflect real increases in atmospheric ^{14}C and are not chance artifacts of the radiocarbon measurement process. One possible interpretation is that they register very large magnitude SPEs that were generated at a time when the Sun was discharging super-sized coronal mass ejections (CMEs).

The two ^{14}C spurts at 12,837 cal yrs BP and 12,639 cal yrs BP, are the largest seen in the Cariaco Basin record. The first registers a 20 per mille rise between two successive 8-year sampling intervals and the second registers a 20 per mille rise between two successive 11-year sampling intervals. The time interval of 198 ± 9 years between them is of particular interest because it approximates the Suess (de Vries) cycle of ~ 200 years, which is believed to be one of the most prominent solar cycles. The Suess cycle is a dominant cycle during the Holocene and has also been identified at 205 ± 5 years in GRIP ice core ^{10}Be data from 25 - 50 kyrs BP (Wagner, et al., 2001), at ~ 197 years in GISP2 Wisconsinian dust data (Ram and Stolz, 1999), and in the ^{14}C record (Stuiver and Kra, 1986; Beer, 2000).

Close to the time of the 12,837 yrs BP ^{14}C spurt, the GISP2 Summit Greenland ice core

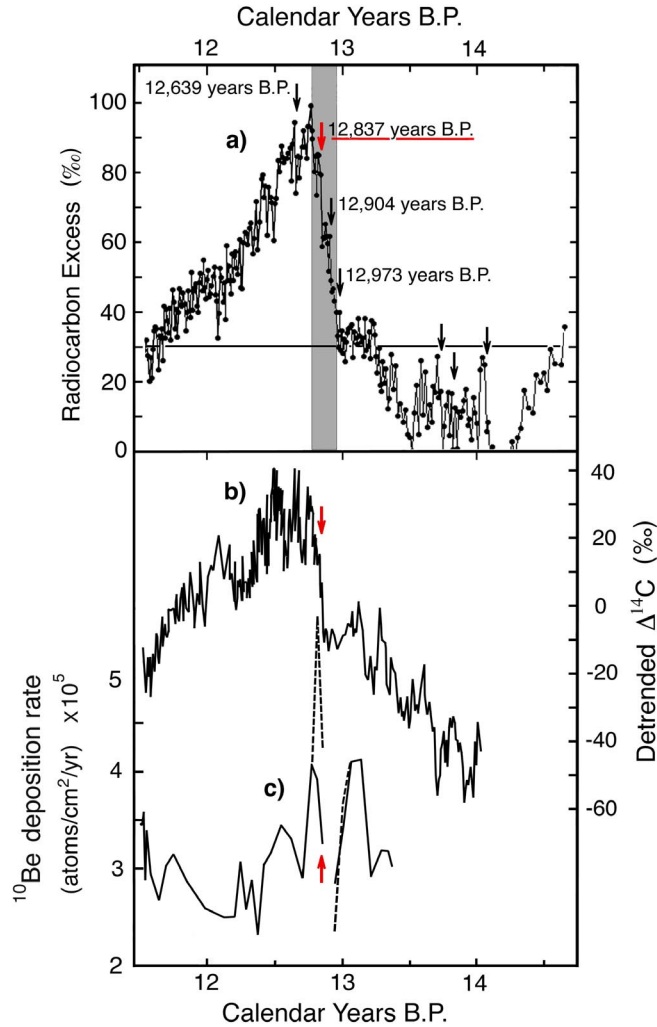


Figure 2. a) Radiocarbon excess relative to trend line as seen in a Cariaco Basin sediment core. Arrows indicate times of large spurts in ^{14}C production, indicative of dates of SPEs. Data is from Hughen, et al. (2000). b) Radiocarbon excess relative to trend line as seen in the floating Late Glacial Pine dendrochronology record (Hua, 2009) matched to the GISP2 ice core ^{10}Be deposition rate profile shown in (c). c) Beryllium-10 deposition rate based on the ^{10}Be concentration data of Finkel et al. (1997) adjusted using the ice accumulation rate data of Alley et al. (1997) and dated according to the Cariaco Basin chronology (solid line). Beryllium-10 deposition rate based on accumulation rates inferred from applying the Cariaco Basin chronology (dashed line).

record registers a prominent peak in ^{10}Be deposition rate, see solid line in figure 2-c. Atmospheric ^{10}Be , like radiocarbon, is currently produced primarily by the intergalactic cosmic ray proton background radiation that strikes the Earth's atmosphere, but large amounts are also produced during SPEs (McCracken et al., 2001a). It is unlikely that this ^{10}Be peak was due to a change in geomagnetic screening since geomagnetic field intensity has been found to have had a minimal effect in modulating ^{10}Be production in high latitude regions such as Greenland (Beer, 1984). The ^{10}Be deposition rate values plotted here are calculated from the ^{10}Be concentration values of Finkel and Nishiizumi (1997) using the ice

accumulation rate data of Alley et al. (1997). Dates assigned to the samples in this profile are based on the Cariaco Basin varve chronology.

The Cariaco Basin varve chronology has been synchronized with the Holocene dendrochronology scale and is believed to be accurate to ± 10 years (Hughen, 2000). It should provide a more reliable time indicator over the Younger Dryas interval than the Greenland ice core chronology since the ice sheet was subject to melting during particularly warm YD intervals. The Cariaco Basin chronology is here transferred to the GISP2 ice core record by matching up major climatic excursions evident in the GISP2 oxygen isotope profile with similar excursions in the Cariaco Basin grayscale profile. Figure 3 illustrates this matching over the early YD and late AL portion of the Cariaco Basin grayscale profile.

Table 1 shows how associated Cariaco Basin varve dates correspond with ice core meter depths for these features seen in the GISP2 and NGRIP Greenland ice core records. The bracketed GISP2 depths are interpolations. The standard GICC05 Greenland ice core chronology (Rasmussen et al., 2008) is shown for comparison in the last column.

Varve dating of the Cariaco Basin grayscale profile shows the Younger Dryas as having lasted for a period of 1414 years, whereas the GISP2 ice core chronology of Alley (1997)

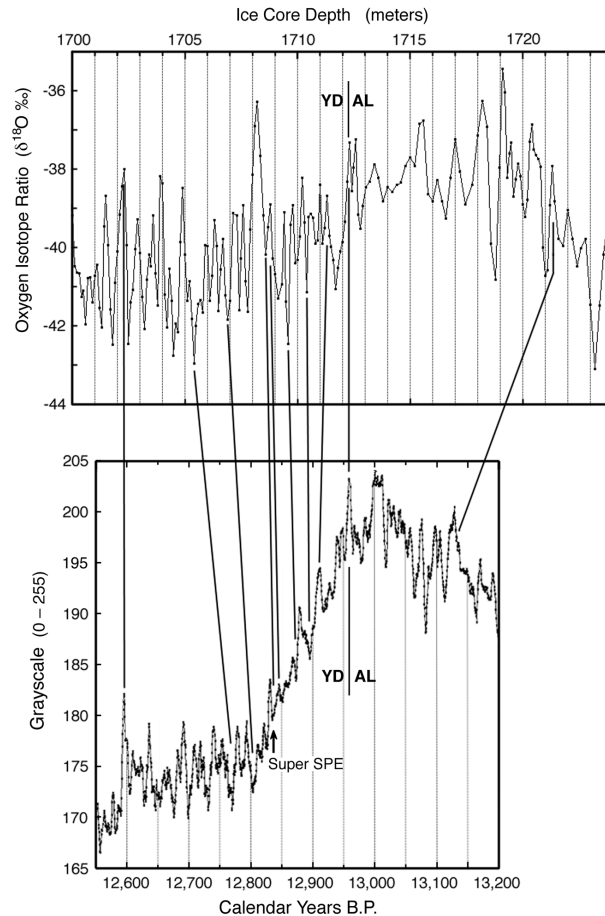


Figure 3. Correspondence between the Cariaco Basin grayscale climate profile (lower graph) and the GISP2 oxygen isotope profile (upper graph), allowing the Cariaco Basin varved chronology to be matched to GISP2 ice core depth scale. Data courtesy of Hughen, et al. (2000) and Stuiver and Grootes (2000).

Table 1.
Depth-Time Marker Horizons Used in Transferring the
Cariaco Basin Chronology to the Summit, Greenland
GISP2 and NGRIP Oxygen Isotope Profiles

Climatic Boundaries	Cariaco Basin (years BP)	GISP2 mid depth (meters)	NGRIP mid depth (meters)	GICC05 Chronology (years BP)
PB ends	11,464	1664.0		
YD ends	11,543	1676.17	1490.44	11,610
temp. min.	11,547	1677.15	1491.45	11,630
temp. min.	11,569	1678.25	1492.15	11,646
temp. min.	11,783	1684.9		11,877
temp. max.	12,161	1688.7		11,998
temp. max.	12,450	1699.2		12,367
temp. max.	12,595	1702.25		12,470
temp. min.	12,770	1705.35		12,591
temp. min.	12,803.5	1706.90	1520.45	12,645
temp. max.	12,831.5	(1708.45)	1521.98	12,696
warming begins	12,834	(1708.55)	1522.08	12,700
acidity spike	12,837	1708.65	1522.20	12,704
temp. max.	12,846	1708.8	1522.35	12,710
temp. min.	12,873	1709.55	1522.98	12,733
temp. min.	12,895	1710.35	1523.78	12,742
temp. max.	12,912	1711.25	1524.43	12,782
YD begins	12,957	1712.25	1526.9	12,856
IACP ends	13,133	1721.26		13,039
IACP begins	13,300	1727.29		13,203
temp. min.	13,653	1762.2		13,048

which is based on counts of annual layers in the ice, shows the Younger Dryas as having lasted only about 1281 years, or 1246 years in the GICC05 ice core chronology. The 156 and 168 year shortfalls in the Greenland chronologies may be attributed to a possible loss through melting of about 11 - 12% of the ice accumulated during the YD period. This could have occurred during the mid and late phase of the YD when the oxygen isotope ratio reached above the -38 per mille Alleröd level on numerous occasions, as seen in high resolution isotope profiles.

The Cariaco Basin chronology projects accumulation rates for the GISP2 ice core that differ from those published by Alley et al. (1997) during the early YD. When the ¹⁰Be deposition rate values are recalculated using ice accumulation rates inferred from the Cariaco Basin chronology, they appear as shown with the dashed line profile in figure 2-c which has been adjusted so that both chronologies give the same ¹⁰Be deposition rate value at a depth of 1717.4 meters (13.06 kyrs BP). This causes the ¹⁰Be deposition rate peak at

12.81 kyrs BP to increase in magnitude and the ^{10}Be data point at 12.94 kyrs BP to decrease in magnitude. So, ^{10}Be deposition rate is now seen to rise more than 50% between the 12.94 kyrs BP sample and the 12.85 kyrs BP sample that spans the 12,837 years BP ^{14}C spurt, thus providing stronger support for the hypothesis that this part of the ice record registers the occurrence of a super SPE. The gap in the data between 12.87 and 12.91 kyrs BP is due to missing ^{10}Be data for the ice core depth range 1709.5 - 1711 meters.

It is proposed that the 12,837 yrs BP ^{14}C spurt evident in the Cariaco Basin ocean sediment record and this ^{10}Be deposition rate peak that closely follows it were both produced by one or more large magnitude SPEs. Finkel and Nishiizumi analyzed 1.6 meter ice core sections for their ^{10}Be data, which span relatively long intervals of 30 to 40 years. So any large increase in ^{10}Be influx rate from a discrete SPE event would average out to a much lower value in the existing ^{10}Be data. To properly represent this ^{10}Be rise, a more detailed stratigraphic analysis is needed in this part of the ice core.

The detrended $\Delta^{14}\text{C}$ profile for the floating Late Glacial Pine (LGP) dendrochronology record taken from the data of Hua, et al. (2009), is compared in figure 2, profile (b) with the detrended Cariaco Basin $\Delta^{14}\text{C}$ profile in (a). This floating LGP profile is anchored to the Cariaco Basin chronology by correlating its sharp $\Delta^{14}\text{C}$ rise with the prominent ^{10}Be deposition rate peak plotted in Figure 2, profile (c).^{*} Compared to the Cariaco profile, the LGP profile shows a smaller ^{14}C excess of about 40 per mille occurring at the beginning of the YD. Nevertheless, it does display a sharp rise in $\Delta^{14}\text{C}$ in coincidence with the sharp rise in ^{14}C excess evident in the Cariaco Basin record at 12,837 cal yrs BP. At the time of this event, $\Delta^{14}\text{C}$ in the LGP record increased 17 per mille within a 20 year time span, reaching an overall increase of 26 per mille after an additional 10 years. By comparison, in the Cariaco Basin profile $\Delta^{14}\text{C}$ increased 20 per mille within an 8 year time span and reached an overall increase of 26 per mille within the space of 25 years (three sampling intervals). A second $\Delta^{14}\text{C}$ peak is seen to follow this primary peak in the LGP record. This matches approximately with the date of the second major Cariaco Basin C-14 spurt at $12,639 \pm 10$ cal yrs BP. The more minor ^{14}C spurts evident in the Cariaco Basin record at $12,973 \pm 10$ and $12,904 \pm 10$ cal yrs BP do not correlate with any significant ^{14}C rise in the LGP profile suggesting that the magnitude of those earlier spurts in the Cariaco Basin profile may have been exaggerated by a sudden reduction in old carbon entering ocean surface waters at the beginning of the YD.

Assessing the Radiation Hazard

The solar proton event that impacted during the February 1956 solar maximum is estimated to have produced an atmospheric $\Delta^{14}\text{C}$ increase of only 0.16 per mille (Usoskin, et al., 2006), or 8% of the variation produced over the course of a typical solar cycle. By comparison, the initial 20 per mille rise in ^{14}C concentration at the time of the 12,837 years BP spurt indicates the occurrence of a SPE that was at least 125 times more intense. Here we are making the assumption that most or all of the spurt's $\Delta^{14}\text{C}$ increase was due to

^{*} Hua, et al. (2009) have also matched the detrended $\Delta^{14}\text{C}$ LGP profile to the same peak in the ^{10}Be deposition rate data of Finkel and Nishiizumi (1997). However they date their ^{10}Be profile using the GICC05 ice core chronology with an applied -65 year correction, which instead dates the YD onset at ~12,760 corrected years BP. Nevertheless, their chronology shows the sharp rise in the LGP $\Delta^{14}\text{C}$ record as occurring ~125 years after the YD onset, which is consistent with the Cariaco Basin chronology which shows the 12,837 yrs BP ^{14}C spurt in the Cariaco Basin record as similarly occurring 120 years after the YD onset.

atmospheric radiocarbon production with little or no contribution from changes in ocean circulation which typically transpire over a much longer time period. This should be a safe assumption since the floating LGP dendrochronology record, which is less vulnerable to changes in ocean circulation, charts a comparable $\Delta^{14}\text{C}$ increase at this time.

The February 1956 SPE is estimated to have delivered a total particle fluence of 10^9 protons/cm² (McCracken et al., 2001a). Hence the 12,837 yrs BP event would have delivered 125 times more, or on the order of 1.25×10^{11} protons/cm². The full 26 per mille rise in $\Delta^{14}\text{C}$ occurring over a period of two decades would translate into a fluence of 1.6×10^{11} protons/cm². The magnitude of the 12,639 years BP spurt translates into a SPE having a fluence of about 1.25×10^{11} protons/cm². Flares of such a large magnitude are not unusual from the astronomical perspective. For example, "superflares" ranging from 10^2 to 10^7 times the energy of the February 1956 solar flare have been observed to occur on nearby sun-like stars (Schaefer, et al., 2000). Jull et al. (1998a) state that the ^{14}C levels present in lunar rock 68815, which are 25% higher than can be explained on the basis of the long-term average cosmic ray exposure, could be accounted for by at least one large SPE having occurred in the past 10^4 years that was capable of delivering an integrated flux of 10^{13} protons/cm². The proposed SPE levels individually and collectively fall below this integrated flux level.

The magnitude of the ground level radiation exposure that animals would have received would depend on the hardness of the SPE's spectrum. Harder spectrum SPEs have greater fluences of high energy cosmic rays, e.g., > 500 Mev, and are capable of deeper penetration through the atmosphere to deliver a higher ground level radiation dose. The February 1956 SPE, which had a relatively hard spectrum, was observed to produce a ground level particle enhancement that was 50 times that of the cosmic ray background measured at Leeds, UK (1 Gev rigidity cut off). Foelsche (1974) estimates as an upper limit that this SPE would have delivered a radiation dose of 0.7 rads/hr at an altitude of 14 kilometers at 60° geomagnetic latitude. This is equivalent to about 1.2 rem/hr or 12 milli Sieverts per hour, where 1 Sievert (Sv) = 100 rems. His radiation dose vs. altitude plot projects a lower value at ground level of about 0.5 mSv/hr (or ~0.25 mSv/hr for his lower limit estimate), the dose reduction being due to the shielding effects of the atmosphere. If it had a comparable spectral hardness, the 12,837 years BP SPE would have delivered a dose rate about 125 fold larger than this, causing animals at sea level to accumulate as much as 3 Sv over a 50 hour period. Here we assume that the period of elevated cosmic ray exposure continued for at least two days as it did during the 1859 Carrington event. Short duration exposure to radiation doses exceeding 3.5 Sv are known to be lethal to humans (Epelman and Hamilton, 2006) with 100% fatalities (LD-100) occurring at around 4 to 6 Sv. LD-100 for most large mammals spans the range from 3 to 8 Sv.

The ring current generated by the 1956 SPE was able to produce a 1% main phase decrease in geomagnetic field intensity (Dessler and Parker, 1959). Consequently, ice age SPEs that were over two orders of magnitude stronger than this could have substantially weakened or overpowered the Earth's field and allowed the full intensity of their cosmic ray plasma to contact the Earth's atmosphere (LaViolette, 1983, 1987). Since Foelsche's estimate assumes a 60° geomagnetic latitude location, which today has a 1 Gev cut-off rigidity, the values projected for the 12,837 yrs BP SPE should be revised upward considering that even mid latitude regions would be left devoid of magnetosphere protection. It is probable, then, that the $12,837 \pm 10$ cal yrs BP SPE could have delivered a

radiation dose of substantially over 6 Sv which would have been lethal to large Pleistocene megafauna that were not sheltered from exposure. This radiation hazard therefore could have been a major cause of the Pleistocene mass extinction.

The geomagnetic excursion produced by the proposed super-sized SPE would be difficult to detect in the sedimentary record due to the event's brevity (~1 year). Nevertheless, a study of Lake Erie sediments near Erieau, Ontario does show that geomagnetic inclination was unstable during the ice age terminal period between about 13,000 to 10,500 ¹⁴C years BP (15,450 to 12,550 cal yrs BP) (Creer, et al., 1976).

The Contemporaneous Mass Extinction.

There is a question as to whether the megafaunal extinction was progressive, perhaps lasting several millennia, or whether it occurred all at once in a single catastrophic event. Meltzer and Mead (1985) have suggested that it progressed over several thousand years with most of the extinct megafauna disappearing at or prior to 11,000±100 ¹⁴C years BP, or at or prior to 12,910±100 cal yrs BP in the Cariaco Basin chronology. Haynes (2008) proposes a slightly more recent cut-off date of 10,900 ± 50 ¹⁴C years BP for the Rancholabrean termination, or 12,883 ± 60 cal yrs BP in the Cariaco Basin radiocarbon chronology. The proposed 12,837 cal yrs BP SPE falls within this date error limit. It should be acknowledged that there is some debate as to how radiocarbon dates should be converted to calendar dates for the early YD period.

Another useful time indicator are dates on Clovis Indian sites, a culture that existed just prior to the Rancholabrean termination. The Clovis cut-off date has been placed between 10,900 and 10,800 ¹⁴C years BP (Meltzer, 2004; Waters and Stafford, 2007). This is equivalent to the interval between 12,880 to 12,840 cal yrs BP in the Cariaco Basin chronology. Hence the Clovis culture end date immediately precedes the date of the proposed solar event.

Another stratigraphic marker that is often referred to in connection with the megafaunal extinction is the black mat, a sediment layer ranging from black to gray to white in color found in the American southwest covering the remains of extinct megafauna. It also overlies the YDB layer which Firestone et al (2007) had proposed is enriched in ET debris. However, the age of the black mat does not "coincide with the abrupt onset of the Younger Dryas cooling", as stated by Firestone, et al. Many black mat sites have base dates younger than the Younger Dryas (Haynes, 2008). Also, Jull, et al. (1998b) have radiocarbon dated this stratum at the Murray Springs site and find it has a base date that ranges from 10,600 to 10,200 ¹⁴C yrs BP, hence between 12,750 and 11,850 Cariaco calendar years BP.

Based on all of the above boundary dates (Rancholabrean, Clovis, and black mat), it is reasonable to place the abrupt termination of the Pleistocene megafauna as having occurred sometime within the first 200 years of the YD onset, or somewhere in the range of 12,950 to 12,750 calendar years BP in the Cariaco Basin chronology. Hence from a chronological standpoint, the proposed 12,837 cal yrs BP solar proton event proves to be a good candidate as being the final cause of the megafaunal demise.

Grayson and Meltzer (2003) note that of the 35 mammal genera that disappeared in the extinction, only 16 can be shown to have lasted beyond 12,000 ¹⁴C years BP (13,750 cal yrs BP). Hence their findings suggest that over half of the genera became extinct one millennium prior to the Rancholabrean termination date. Faith and Surovell (2009), however, suggest that sampling error could explain why a majority of genera appear to have

become extinct prior to 12,000 ¹⁴C years BP and that the megafaunal radiocarbon data is consistent with the hypothesis that all 35 species became extinct in the interval 10,000 to 12,000 ¹⁴C years BP, possibly even due to an abrupt and catastrophic event.

The proposed solar proton event hypothesis, like the comet impact/explosion scenario of Firestone, et al. (2007), is compatible with the occurrence of a single main catastrophic event. But, unlike the solitary-event comet scenario, the solar hypothesis also allows the possibility of the occurrence of multiple hazardous events of varying magnitude, as suggested by the presence of multiple ¹⁴C spurts seen in both the Cariaco Basin and LGP dendrochronology records during the early YD as well as around the beginning of the IACP.*

A Super SPE Possibly Recorded in Polar Ice.

By transferring the Cariaco Basin chronology to the GISP2 ice core record, using the climate profile correlations given in Table 1, it is possible to locate a specific ice core depth, 1708.65 meters, correlative with the 12,837 cal yrs BP spurt. At this correlated depth, the ice record registers a solitary large amplitude acidity spike detected by means of the electrical conductivity measurement (ECM) technique. A high resolution ECM plot of this acidity spike, charted at millimeter intervals along the ice core length, is shown in figure 4 (Taylor, et al., 1993). This same ECM event is also registered at depth of 1657.51 m in the GRIP ice core and at 1522.2 m in the NGRIP ice core. It is unique in that a spike of such large magnitude is not seen for hundreds of years. It is the second largest acidity spike to occur during the Younger Dryas period. On the basis of the transferred Cariaco Basin chronology, it dates at 12,837±10 cal yrs BP, hence indicating that very acidic snows were being deposited around the time of the hypothesized 12,837 cal yrs BP super SPE. The snows falling at the time of this event were so highly acidic that they increased the electrical conductivity of the ice 1000 fold compared with background conductivity levels prevailing before the event. Highly acidic snows would be an expected outcome if, as suggested earlier, the atmosphere had been exposed to a high flux of cosmic rays during a large-magnitude solar proton event.

The laser light scattering (LLS) data for this section of the ice core shows that ice opacity, an indicator of ice dust content, underwent a 100% increase above background levels at the time of the ECM spike (Ram, et al., 1997). This relatively modest LLS peak, which spans about one centimeter of ice, likely represents the true width of this acidity spike, as compared with the 4 cm width for the ECM peak. The broader ECM width arises because the electrodes used in measuring ice core conductivity are spaced one centimeter apart, and hence blur discrete acidity spike signals making them look broader than they really are. Also some peak broadening may be due to the tendency for the acid ions to diffuse through the snowpack or firn layers following their initial deposition. Based on the annual layer

* If a super SPE had occurred as proposed and caused the ground level cosmic ray intensity to reach very high levels in certain geographic locations, this could explain why some megafaunal remains have anomalously young radiocarbon dates uncharacteristic of the strata age they are found in. That is, incident solar cosmic ray protons could have generated thermal neutrons within animal tissues which upon colliding with organic nitrogen could produce radiocarbon in situ in the animal remains (LaViolette, 1983). Examples include the problematically young date of 2,040 ± 90 ¹⁴C years BP found for the terminal Pleistocene deposits in St. Petersburg, Florida and also several mastodon remains in Michigan found to date at around 6000 ¹⁴C years BP (Martin, 1967). A young date of 5140 BC has been found for a mastodon in Utah (Miller, 1987) and a date of 4150 BC has been found for one in Washtenaw, Michigan (Skeels, 2002).

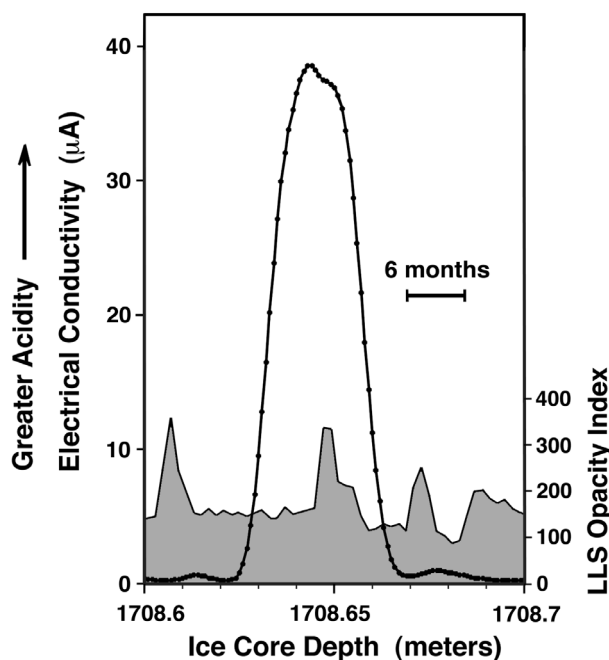


Figure 4. Ice core conductivity profile from the GISP2 Greenland ice core indicating a period of high ice acidity possibly due to the arrival of a super sized SPE. Shown for comparison is the relative scattered light intensity indicating ice opacity. The event has been dated by adjusting the GISP2 ice core chronology to the Cariaco Basin varve chronology. Data are from Taylor et al. (1993) and Ram et al. (1997).

thickness of 3.3 cm/yr estimated for this portion of the ice core on the basis of the Cariaco Basin chronology, a one centimeter wide ECM event would span about 4 months. Such a duration is consistent with the duration of the ECM signals for historical solar proton events. For example, the ECM signal for the Carrington event is seen in one GISP2 core to have a duration of three months (Dreschhoff and Zeller, 1994).

Nitrate ions are produced when the atmosphere is exposed to cosmic rays. Hence nitrate ion concentration spikes serve as good indicators of SPEs. McCracken et al. (2001a, 2001b) have found that nitrate ion concentration spikes registered in the polar ice record during the period 1561 to 1950 correlate with major historical SPEs and that impulsive nitrate events serve as reliable indicators of large fluence SPEs. The 12,837 yrs BP ECM spike is seen to be associated with high nitrate ion concentrations in the GISP2 ice record, where the nitrate values plot 10 cm sample increments (Yang, et al, 1995); see figure 5. The 200 ppb peak visible here is the highest nitrate level to occur during the entire Younger Dryas period, supporting the present suggestion that the 12,837 yrs BP acidity peak records the occurrence of a very large magnitude cosmic ray event. A small magnitude acidity spike measuring about 4% of the height of the 12,837 yrs BP ECM spike is seen at a depth of 1707.75 meters, dating to around 12,819 cal yrs BP. It too is seen to be associated with elevated nitrate ion concentrations, implicating that it also may mark the occurrence of a solar proton event. It correlates with the 6 per mil rise $\Delta^{14}\text{C}$ seen in the Cariaco Basin record to follow the 12,837 yrs BP spurt.

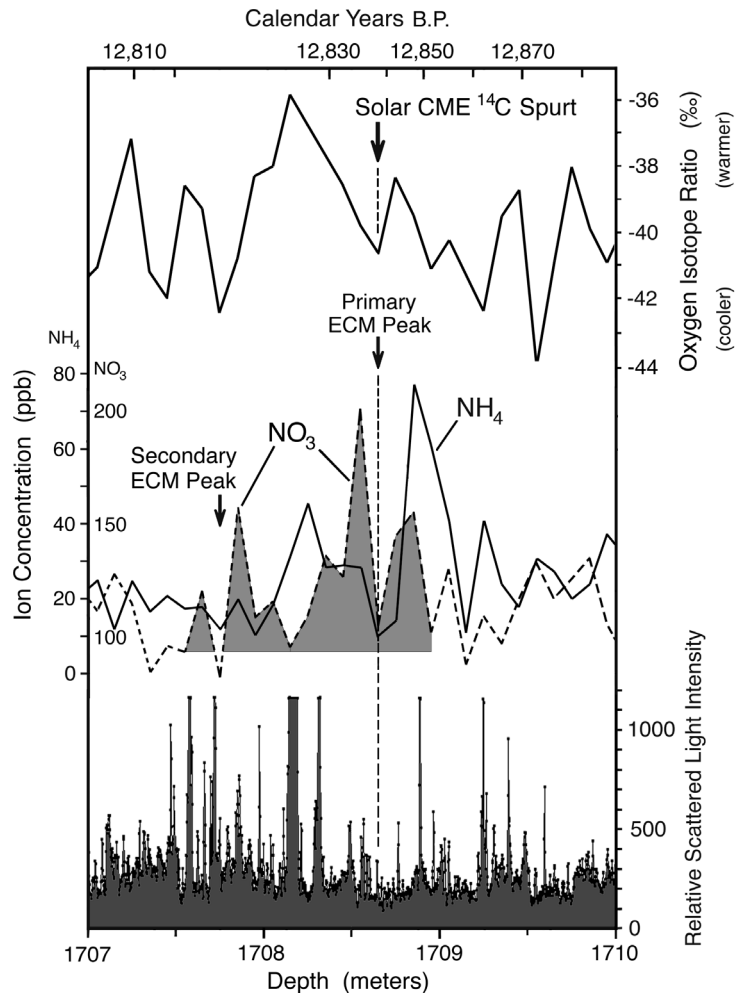


Figure 5. Nitrate and ammonium ion concentration in the GISP2 ice core (Yang et al., 1995; Taylor et al., 1996) compared to oxygen isotope ratio (upper profile) (Stuiver and Grootes, 2000) and relative scattered light intensity (lower shaded profile) (Ram et al., 1997). The upper scale gives correspondence to the Cariaco Basin varve chronology. Large arrows indicate the depth of the GISP2 ECM spike and the correlated $12,837 \pm 10$ cal yrs BP ^{14}C spurt. Small arrow indicates the time of a subsequent small magnitude ECM spike.

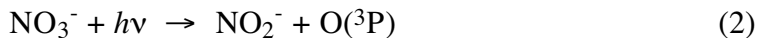
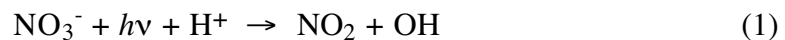
The nitrate ion peaks associated with the 12,837 yrs BP acidity spike registers a cumulative, or "integrated", nitrate ion concentration amounting to 2900 ng/cm^2 over the extent of its peak. The smaller event at 12,819 yrs BP registers an integrated nitrate ion concentration of $\sim 1400 \text{ ng/cm}^2$. Although this secondary SPE would have been smaller in magnitude than the proposed primary 12,837 yrs BP event, its radiation also would likely have been harmful to Pleistocene mammals.

The Carrington event of 1859, the largest solar proton event to occur in modern times, is also reported to have produced a significant nitrate ion concentration spike in the Greenland ice record with a nitrate ion fallout lasting about two and a half months (Dreschhoff and Zeller, 1994). McCracken et al. (2001b) estimate that this SPE produced an integrated nitrate ion concentration of 750 ng/cm^2 in Greenland ice. Based on this, they have

calculated that it had a particle fluence of about 1.9×10^{10} protons/cm² with energy >30 Mev, hence a magnitude about 20 times greater than that of the February 1956 SPE. The integrated nitrate ion concentration for the 12,837 yrs BP SPE is estimated to be at least 4 fold greater than that of the Carrington event.

Estimating the fluence of the 12,837 yrs BP super SPE by comparing its integrated nitrate ion concentration to that of historical SPEs could underestimate its true magnitude. Very large magnitude SPEs produce NO_x and OH ions in the mesosphere and stratosphere in sufficient quantities to destroy the Earth's polar ozone layer. This substantially increases the solar UV flux which photolytically dissociates nitrate ions deposited in surface snows. Hence the fraction of the nitrate ion flux that is ultimately preserved in the ice record is expected to be substantially lower for a super SPE than for historical SPEs of lesser magnitude. In addition, nitrate ions would be created not only by the SPE, but also by the coronal mass ejection that would follow it. So, it is difficult to assess what fraction of the total nitrate signal would be attributable just to the SPE.

Field studies in Antarctica and Greenland have shown elevated NO_x levels above sunlit snowpacks, implicating photochemical processes acting on the snowpack (Jones et al., 2000). Experiments conducted in polar regions have demonstrated that NO_x is produced within the snowpack and released from its surface at a rate that varies with the UV diurnal cycle (Jones et al., 2000, 2001; Dibb et al., 2002). McCabe et al. (2005) have demonstrated in the laboratory that nitrate concentrations in ice decrease as much as ten fold when exposed to a 313 nm UV photon flux of ~0.35 sun equivalent for up to 2 days. They propose that this occurs through the photolytic reactions:



Such photolytic reactions account for why contemporary surface snows contain up to 300 ppb of nitrate while concentrations 1 meter below can range only from 20 - 80 ppb (Wolff, 1995).

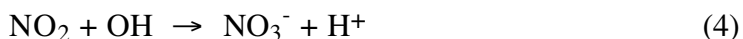
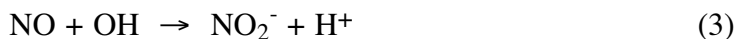
An indication that nitrate ions were substantially depleted at the time of both the 12,837 yrs BP and the 12,819 yrs BP events is seen in the nitrate ion profile of figure 5. Nitrate ion concentration is instead seen to peak immediately before and immediately after each ECM spike and to reach minimum values in coincidence with each acidity spike event. Arrows indicate where NO₃⁻ would have originally peaked at the time of snow deposition. This depletion suggests that both SPEs produced stratospheric nitrates in sufficient quantities to destroy the Earth's polar ozone layer. By comparison, SPEs that have occurred in recent decades, which were far smaller in magnitude, exhibit polar ice nitrate ion concentration peaks that occur in coincidence with their polar ice ECM spikes (Zeller and Dreschhoff, 1995; McCracken et al., 2001a). In other words, because they had a much smaller effect in causing ozone layer depletion, solar UV would have been less able to photochemically deplete snow pack nitrate ions, leaving their ion peaks intact.

The SPE that occurred on July 2000 (fluence ~ 4×10^9 protons/cm² with energy >30 Mev) was found to eliminate 9% of the ozone in the upper stratosphere and up to 70% in the middle mesosphere over a period of several days in northern polar regions above 60° geomagnetic latitude (Jackman et al., 2001). The 12,837 yrs BP super SPE, which is estimated to have been 30 times larger than this, would have been able to deplete the Earth's ozone layer to a much greater extent and over a much more extended period of time than has

been observed for recent lower fluence SPEs. Given that the nitrate ion troughs present at the time of this acidity peak and the subsequent acidity event both span a period of several years, we may infer that the ozone depletion persisted for a comparable period of time. They may have created an ozone layer hole that reached even to mid latitudes.

Destruction of the ozone layer at the time of the YD super SPE is of particular interest from the standpoint of its effect on animal survivability. For example, Reid et al. (1976) have proposed that past mass extinction episodes could have been caused by solar proton events that were sufficiently large to cause ozone depletion and allow UV radiation to reach lethal levels. They have suggested that this could account for the finding of Hays et al. (1967, 1969) and Hays (1971) that mass extinctions tend to correlate with geomagnetic polarity reversals. Similarly, in the case of the 12,837 yrs BP and 12,819 yrs BP SPEs, the expected elevation of the solar UV flux could have posed a serious bio hazard in lower latitudes and could have been a major factor contributing to the demise of the megafauna.

The nitrates in surface snows would likely have become vertically displaced to deeper snow layers. Nitric oxides generated photolytically in surface snows would have migrated downward to invade lower snowpack strata where the NO_x would have reacted with the elevated concentrations of OH present there to regenerate nitrate ions through the following cage reactions (Dubowski et al., 2001; McCabe et al., 2005):



Such nitrate regeneration would have resulted in a redistribution of NO_3^- ions from the UV photolyzed high-acidity snow layer to layers deposited prior to the SPE's occurrence. This would explain why a large nitrate ion peak immediately precedes each acidity spike stratum.

During the period when the stratospheric ozone layer was depleted, NO_2 concentrations in the mesosphere and stratosphere would have risen partly due to the near absence of the nitrate production reaction $\text{NO}_2^- + \text{O}_3 \rightarrow \text{O}_2 + \text{NO}_3^-$ and partly through increased NO_3^- photolysis via reaction (1) and (2). Once the ozone layer had become reestablished, stratospheric reactions would have favored NO_3^- ion production from the elevated concentrations of NO_x precursors that had previously accumulated. This would have boosted the rate of NO_3^- ion precipitation from the stratosphere and mesosphere, thereby explaining the presence of the NO_3^- peaks that follow the 12,837 and 12,819 yrs BP acidity events. This extended period of elevated rate of nitrate ion production and precipitation, which could have lasted for two to four years after SPE impact, may be accounted for by a combination of both atmospheric chemistry effects and the time required for the ions to fall from the stratosphere and become incorporated as HNO_3 in snow precipitation. Jackman et al. (1980) have found that it took about one year for the atmosphere's ion concentrations to return to pre-event levels following the August 1972 SPE. So a several year period of elevated nitrate ion deposition for these early-YD events does not seem unusual. During the period that followed the regeneration of the ozone layer, the UV influx would have reduced sufficiently to allow a greater percentage of the deposited nitrate ion to survive in the snowpack.

The 12,837 yrs BP and 12,819 yrs BP ECM spikes are also found to coincide with moderate increases in sulfate ion concentration, three fold and two fold respectively. This is not unexpected. The high concentrations of NO_x and OH radicals generated in the

stratosphere by the SPE create condensation nuclei which attach to sulfate aerosols and accelerate their deposition through a scavenging process (Shumilov et al., 1996, McCracken et al., 2001b). Such sulfate peaks have been observed in association with contemporary events such as the February 1956 SPE (Isaksson et al., 2001). This raises the concern that many ECM spikes seen in the ice core record in association with sulfate peaks may have been mistakenly interpreted as volcanic events.

It is unlikely that the 12,837 years BP acidity spike was due to a volcanic eruption for several reasons. First, no volcanic eruption is known to have occurred at that time. The Laacher See eruption has been dated by dendrochronology to have occurred 200 years prior to the onset of the YD cooling (Baales, et al., 1999), hence over three centuries prior to this event. Also the presence of large nitrate peaks in association with this ECM spike favor a SPE interpretation. For example, a study of ECM and nitrate ion data in GISP2 ice over the past four centuries shows that nitrate ion spikes are associated with known SPEs but not with historic volcanic eruptions (Dreschhoff and Zeller, EJ, 1994; Zeller and Dreschhoff, 1995). Considering the unique magnitude of this spike, its 10^3 fold increase in acidity, and its time correlation to the 12,837 years BP ^{14}C spurt, a solar origin seems more likely.

Ammonium ion concentration, an indicator of biomass combustion, is also seen to peak around the time of the 12,837 cal yrs BP ^{14}C event, reaching its highest value for the YD period (Taylor, et al., 1996). Concentrations of formate and oxylate ion, also indicators of biomass combustion, reached high levels around this time as well (Legrand, 1992). The LLS data for the GISP2 ice core (Ram, et al., 1997) registers a number of dark layers in this part of the ice record; see Figure 5, lower profile. Dark layers spanning about 4 and 7 centimeters of ice are seen to correlate with the ammonium concentration peak that follows the 12,837 years BP ECM spike and a dark layer spanning about 1 centimeter of ice is seen to correlate with the ammonium peak that precedes this ECM spike.

Some report sedimentary evidence of extensive wildfires having occurred around this time (Stich et al., 2008; Kennett et al., 2010; and Mahaney et al., 2010). Scott et al. (2010), however, oppose the idea of catastrophic wildfires having been impact induced during the early YD, noting that reports of glassy carbon spherules may actually be a misidentification of fungal sclerotia that were charred in low-intensity burning. Furthermore the suggestion by Firestone et al.(2007) that this early YD wildfire episode was associated with a comet impact and a nuclear winter cooling is not supported by the glacial record. The high ammonium concentrations instead are seen to have occurred over a century after the beginning of the YD cooling and to have occurred during warm intervals that both preceded and followed the 12,837 years BP ECM spike. This is seen most clearly in the NGRIP ice core record presented in figure 6 (Steffensen, 2008). The discovery that these biomass combustion indicators reach maximum values preferably during these two periods of climatic warming is consistent with the findings of Marlon et al. (2009) who report that wildfires historically tend to occur at times of climatic warming possibly due to an associated increase in climatic aridity. The occurrence of these wildfires may have temporarily eradicated the food supply for herbivores in some regions.

The two successive temperature maxima seen in the NGRIP core are spaced from one another by about one solar cycle period, which raises the question of whether the warmings may have been due to an increase in the Sun's total energy output during this period. Current observations show that solar irradiance is 0.1% higher at solar maximum as compared with solar minimum which is far too small to have any significant climatic effect.

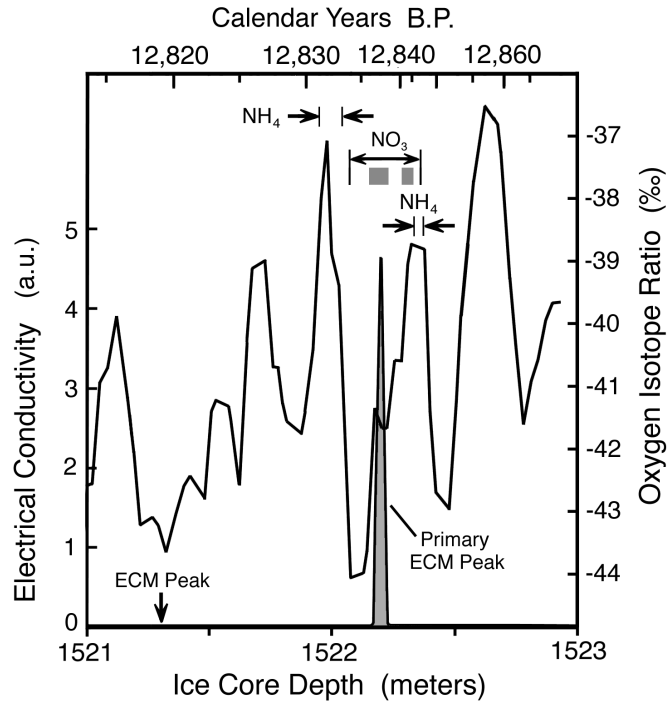


Figure 6. High resolution oxygen isotope profile for the NGRIP Summit Greenland ice core (solid line) compared to relative electrical conductivity (lower shaded profile) (Steffensen, 2008). Horizontal arrows indicate periods of elevated NH_4 and NO_3 ion concentration. Shaded bands indicate intervals of nitrate ion depletion. Dating is based on the Cariaco Basin varve chronology.

However, 10 to 20% of this irradiance variation is in the UV, and UV output correlates positively with the level of solar flare activity. So if flare activity was substantially higher than current levels during this time, the solar constant could have increased sufficiently to have substantially impacted climate. Of the two climatic warmings, the one following the 12,837 years BP ECM event was the most extreme. Oxygen isotope ratio rose by almost 7 per mille within less than three years, bringing the climate in Greenland back to Alleröd temperatures. This warming was more moderate in the subtropics as indicated in the Cariaco Basin profile.*

Condensation nuclei ions being produced in the stratosphere by the impacting solar cosmic rays would have formed stratospheric clouds, increasing the opacity of the stratosphere and reducing light transmission to the Earth's surface. This could explain why the NGRIP ice core oxygen isotope profile shows a sudden cooling lasting about two years immediately after the 12,837 years BP acidity spike (figure 6). Light occlusion from

* A similar pattern of an initial cooling spike followed by a prolonged warming is also evident in the case of the ECM event seen at the end of the Younger Dryas at a depth of 1678.3 meters in the GISP2 ice core (11,571 cal yrs BP). This was the largest magnitude ECM spike to occur during the YD. It coincided with a one-year long cooling, registered as a -4 per mille change in oxygen isotope ratio, and was immediately followed by a 14-year warming. An almost equally large ECM spike registered one Hale solar cycle later (22 years), coincided with an abrupt climatic cooling followed by the decade long warming that ended the YD and heralded the beginning of the Holocene. This terminal event also appears to coincide with a small ^{10}Be deposition rate peak. This suggests that an overly active Sun may have played a significant role also in causing abrupt climatic change at the end of the ice age.

stratospheric clouds may have impaired the survival of plant life and been a contributing factor in the megafaunal extinction.

Extraterrestrial dust and the collapse of the circumterrestrial dust cloud.

A SPE intense enough to induce a partial collapse of the magnetosphere would likely have had a significant effect on the circumterrestrial dust cloud. Satellite and rocket observations have shown that the Earth is surrounded by a dust cloud extending radially outward from the Earth for a distance of 10^5 to 10^6 km, or for up to 15 to 150 earth radii (Divari, 1966, 1967; Tverskoi, 1967; Senatorov, 2000). Sunlight scattered from this dust is believed to account for at least 10% of the light of the zodiacal cloud (Divari, 1965). Compared with interplanetary space, the number density of dust particles is estimated to be 10^5 fold higher for particles in the radial size range 0.1 to 10 μm , 3000 fold higher for particles having radii on the order of 100 μm , and tapering down to essentially no enhancement for 1 cm sized meteoroids. It is estimated that dust particles may have residence times in this cloud for upwards of thousands of years.

The cloud acquires this dust from the local interplanetary environment and also from particles blown off the surface of the Moon by the impacting solar wind (Divari, 1966). Dust grains in the interplanetary environment acquire an electrical charge through photoionization by solar UV and through encounters with background plasma electrons and ions (Sickafoose et al. 2000; Shukla, 2001). Such charged grains are susceptible to being picked up by Earth's magnetosphere and magnetotail as the Earth orbits the Sun. Dust particles trapped in certain parts of this cloud could have been heated to their melting point by the cosmic ray plasma of repeated SPE or CME impacts, hence turning some into cosmic spherules. Such cosmic ray heating would have been greatest between one and four earth radii above the Earth's surface where the dust cloud's dense inner portion is intersected by the Earth's storm time radiation belts. A somewhat similar heating process has been proposed to account for the spherules found on the Moon (Mueller and Hirsch, 1970).

Since the dust particles in the sheath have very low velocities relative to the Earth, their motions are dominated by the geomagnetic field. They would be particularly susceptible to movement of the geomagnetic field since the Lorentz force is stronger than gravity for particles in the mass range 10^{-20} g to 10^{-15} g (r from 0.1 μm to 5 μm) (Alfven and Arrhenius, 1979). The compression and subsequent partial collapse of the magnetosphere brought about by the arrival of the 12,837 cal years BP super SPE and its associated coronal mass ejection could have jettisoned a large fraction of this dust into the Earth's stratosphere leaving the particles to settle to the Earth's surface over a period of months to years. Magnetic particles present in this dust cloud would have been particularly susceptible to transport.

The circumterrestrial dust cloud is estimated to presently contain a 10^4 to 10^5 fold higher dust concentration than the interplanetary ambient. Figuring the interplanetary dust concentration to be on the order of 2×10^{-22} g/cm³, the sheath's dust mass concentration may currently reach 10^{-17} g/cm³, with 10^{13} grams being present in the inner portion of the cloud within 10^5 km (fifteen earth radii) of the Earth's surface. If solar system cosmic dust concentrations were substantially higher at the end of the last ice age (LaViolette, 1983, 1985, 2005), this potential cosmic dust source could have amounted to as much as 10^{15} g.

The negative results reported by some research teams seeking evidence of ET indicators in early YD sediments calls into question the existence of a uniformly distributed layer of

homogenized debris as might be expected to come from a comet impact fireball. On the other hand, given that several groups have found ET markers in certain locales, the possibility remains that extraterrestrial material may have been deposited nonuniformly, as might occur in the case of a dust sheath collapse. Since dust particles would have entered the atmosphere with low kinetic energy, they would have made a negligible contribution to the polar ice nitrate ion signal.

Conclusion.

Spurts of ^{14}C production evident in the Cariaco Basin varve record spaced at 22-year solar cycle intervals likely record times of super-sized solar proton events, some of which may have been intense enough to overpower and penetrate the magnetosphere. The largest of these radiocarbon spurts, which dates at $12,837 \pm 10$ years BP in the Cariaco Basin record, is shown to correlate in time with a prominent short-duration acidity spike found in the Summit, Greenland ice core record which is positioned in the midst of prominent nitrate ion concentration maxima indicative of substantial atmospheric ionization by cosmic rays. Extrapolations based on the ^{14}C data suggest that the 12,837 cal yrs BP SPE had about 125 times the fluence of the February 1956 SPE and was strong enough to deliver a ground level radiation dose exceeding 3 Sv over a two day period. Radiation doses in excess of 6 Sv are projected if the associated solar storm main phase decrease had induced a collapse of the magnetosphere. This super SPE is proposed to have been the cause of the final disappearance of the Pleistocene megafauna. A super SPE occurring around 12,819 yrs BP may have also contributed to the megafaunal demise. Smaller mammals and birds unprotected from the particle radiation would also have been at risk. Elevated levels of UV radiation resulting from destruction of the ozone layer would have posed an additional hazard. Cosmic dust from the circumterrestrial dust sheath injected into the stratosphere at the time of super SPE impact could account for the sporadic reports of ET indicators in early YD sediments and Greenland ice.

A definitive test of the solar super SPE hypothesis could be made by analyzing Greenland ice in the vicinity of the 1708.65 meter acidity spike to determine whether a large increase in ^{10}Be concentration occurred at that time. Additional analysis of PGEs in this portion of the ice core could check whether the proposed SPE may have been sufficiently strong to cause a collapse of the circumterrestrial dust sheath.

References

- Alfven H, Arrhenius G. 1979. *Evolution of the Solar System* (NASA, Washington).
- Alley RB, et al. 1997. Visual-stratigraphic dating of the GISP2 ice core: Basis, reproducibility, and application. *Journal of Geophysical Research* 102: 26367-26381.
- Baales M, Bittmann F, Kromer B. 1999. Verkohlte Bäume im Trass der Laacher See-Tephra bei Kruft (Neuwieder Becken). Ein Beitrag zur Datierung des Laacher See-Ereignisses und zur Vegetation der Alleröd-Zeit am Mittelrhein. *Archäologisches Korrespondenzblatt* 28: 191-204.
- Beer J, et al. 1984. The Camp Century ^{10}Be record: Implications for long-term variations of the geomagnetic dipole moment. *Nucl. Inst. Methods in Physics Res.* B5: 380-384.
- Beer J. 2000. Long-term indirect indices of solar variability. *Space Sci. Rev.* 94: 53-66.

- Beets C, Sharma M, Kasse K, Bohncke S. 2008. Search for extraterrestrial osmium at the Allerod - Younger Dryas boundary. Fall AGU Meeting.
- Creer KM, Anderson TW, Lewis CFM. 1976. Late quaternary geomagnetic stratigraphy recorded in Lake Erie sediments. *Earth and Planetary Science Letters* 31: 37-47.
- Dessler AJ, Parker EN. 1959. Hydromagnetic theory of geomagnetic storms. *Journal of Geophysical Research* 64: 2239-2259.
- Dibb JE, Arsenault M, Peterson MC, Honrath RE. 2002. Fast nitrogen oxide photochemistry in Summit, Greenland snow. *Atmospheric Environ.* 36: 2501-2511.
- Divari NB. 1965. Contribution of the circumterrestrial dust cloud to the brightness of the zodiacal light and F-corona. *Astronomicheskii Zhurnal* 42: 645-652.
- Divari NB. 1966. Charged dust particles in interplanetary space. *Astronomicheskii Zhurnal* 43: 192-197.
- Divari NB. 1967. The cosmic dust cloud around the Earth. *Soviet Astronomy* 10:1017-1030.
- Dreschhoff, GAM, Zeller, EJ. 1994. 415-year Greenland ice core record of solar proton events dated by volcanic eruptive episodes. *Inst. Tertiary-Quaternary Studies - TER-QUA Symposium Series* 2:1-24.
- Dubowski Y, Colussi AJ, Hoffmann MR. 2001. Nitrogen dioxide release in the 302 nm band photolysis of spray-frozen aqueous nitrate solutions: Atmospheric implications. *J. Phys. Chem. A* 105: 4928-4932.
- Edwards WE. 1967. The Late Pleistocene extinction and the diminution in size of many mammalian species. *Pleistocene Extinctions: The Search for a Cause*, eds. Martin PS, Wright HE, Jr. (Yale University Press, New Haven), pp. 141-154.
- Epelman S, Hamilton DR. 2006. Medical mitigation strategies for acute radiation exposure during space flight. *Aviation, Space, and Environmental Medicine* 77:130-139.
- Faith, JT, Surovell T. (2009). Synchronous extinction of North America's Pleistocene mammals. *Proc. Nat. Acad. Sci.* **106**: 20641-20645.
- Finkel, RC, Nishiizumi K. 1997. Beryllium 10 concentration in the Greenland ice sheet Project 2 ice core from 3 - 40 ka. *J. Geophysical Research* **102**: 26,699 – 26,706.
- Firestone RB, West A, Warwick-Smith S. 2006. *Cycle of Cosmic Catastrophes* (Bear, Rochester, VT).
- Firestone RB, *et al.* 2007. Evidence for an extraterrestrial impact 12,900 years ago that contributed to the megafaunal extinctions and the Younger Dryas cooling. *Proc. Nat. Acad. Sci.* 104:16016 -16,021.
- Firestone RB, West A, Bunch TE. 2010. Confirmation of the Younger Dryas boundary (YDB) data at Murray Springs, AZ. *Proc. Nat. Acad. Sci.* 107:E105.
- Foelsche T. 1974. Estimates of radiation exposure from solar cosmic rays in SST altitudes, NASA TM X-71990.
- Grayson DK. 1977. Pleistocene avifaunas and the overkill hypothesis. *Science* 196:691-693.
- Grayson DK, Meltzer DJ. 2003. A requiem for North American overkill. *Journal of Archaeological Science* 30: 585-593.
- Guilday JE. 1967. Differential extinction during late-Pleistocene and recent times. In *Pleistocene Extinctions: The Search for a Cause*, eds. Martin PS, Wright HE, Jr. (Yale University Press, New Haven), pp. 121-140.

- Haynes CV, Jr. 2006. The Rancholabrean termination: Sudden extinction in the San Pedro Valley, Arizona 11,000 B.C. In *Paleoindian Archeology: A Hemispheric Perspective*. eds. Morrow JE, Gnecco C (Univ. of Florida Press, Gainesville, FL).
- Haynes CV, Jr. 2008. Younger Dryas "black mats" and the Rancholabrean termination in North America. *Proc. Nat. Acad. Sci. USA* 105: 6520-6525.
- Haynes, CV, Jr. et al. 2010. The Murray Springs Clovis site, Pleistocene extinction, and the question of extraterrestrial impact. *PNAS* 107: 4010-4015.
- Hays JD, Opdyke ND. 1967. Antarctic radiolaria, magnetic reversals and climatic change. *Science* 158: 1001-1011.
- Hays JD, Saito T, Opdyke ND, Burckle L. 1969. Pliocene/Pleistocene sediments of the equatorial Pacific: Their paleomagnetic biostratigraphic and climatic record. *Geological Soc. Amer. Bull.* 80: 1481-1514.
- Hays JD. 1971. Faunal extinctions and reversals of the Earth's magnetic field. *Geological Soc. Amer. Bull.* 82: 2433-2447.
- Hua, Q., et al. 2009. Atmospheric ^{14}C variations derived from tree rings during the early Younger Dryas. *Quat. Sci. Rev.* 28: 2982-2990.
- Hughen KA, Southon JR, Lehman S, Overpeck J. 2000. Synchronous radiocarbon and climate shifts during the last deglaciation. *Science* 290:1951-1954.
- Isaksson E, et al. 2001. A new ice-core record from Lomonosovfonna, Svalbard: Viewing the 1920-97 data in relation to present climate and environmental conditions. *J. of Glaciology* 47: 335-345.
- Jackman CH, Frederick JE, Stolarski RS. 1980. Production of odd nitrogen in the stratosphere and mesosphere: An intercomparison of source strengths. *J. Geophys. Res.* 85: 7495-7505.
- Jackman CH, Peters RD, Labow GJ, Fleming EL, Praderas CJ, Russell JM. 2001. Northern hemisphere atmospheric effects due to the July 2000 Solar Proton Event. *Geophys. Res. Lett.* 28: 2883-2886.
- Jones AE, Weller R, Wolff EW, Jacobi HW. 2000. Speciation and rate of photochemical NO and NO₂ production in Antarctic snow. *Geophys. Res. Lett.* 27: 345-348.
- Jones AE, Weller R, Anderson PS, Jacobi HW, Wolff EW, Schrems O, Miller H. 2001. Measurements of NO_x emissions from the Antarctic snowpack. *Geophys. Res. Lett.* 28: 1499-1502.
- Jull, AJT., Cloutd S, Donahue DJ, Sinsterson JM, Reedy RC and Masarik J 1998a. " ^{14}C depth profiles in Apollo 15 and 17 cores and lunar rock 68815." *Geochimica et Cosmochimica Acta* 62: 3025-3036.
- Jull, AJT., Haynes jr. V, Danahue D, Bur GS, Beck JW. 1998b. Radiocarbon ages at Murray Springs, Arizona and the influence of climate change on Clovis man. *Proc. 3rd Conf. on ^{14}C and Archaeology*, Lyons, France.
- Kennett DJ, et al. 2008. Wildfire and abrupt ecosystem disruption on California's Northern Channel Islands at the Ållerød–Younger Dryas boundary (13.0–12.9 ka). *Quat. Sci. Rev.* 27: 2530-2545.
- Kurbatov A, et al. 2010. Discovery of a nanodiamond-rich layer in the Greenland ice sheet. *Journal of Glaciology* 56: 747-757.
- LaViolette PA. 1983. *Galactic Explosions, Cosmic Dust Invasions, and Climatic Change*. PhD dissertation, Portland State University, Portland, OR.

- LaViolette PA. 1985. Evidence of High Cosmic Dust Concentrations in Late Pleistocene Polar Ice. *Meteoritics* 20: 545-558.
- LaViolette PA. 1987. Cosmic ray volleys from the Galactic center and their recent impact on the Earth environment. *Earth, Moon, and Planets* 37:241-286.
- LaViolette PA. 1990 Galactic core explosions and the evolution of life. *Anthropos* 12: 239-255.
- LaViolette PA. 2005. Solar cycle variations in ice acidity at the end of the last ice age: Possible marker of a climatically significant interstellar dust incursion. *Planetary and Space Science* 53:385-393.
- Legrand MR, De Angelis M, Staffelbach T, Neftel A, Stauffer, B. 1992. Large perturbations of ammonium and organic acids content in the Summit-Greenland ice core. Fingerprint from forest fires? *Geophys. Res. Lett.* 19: 473-475.
- Mahaney WC, et al. 2010. Evidence from the northwestern Venezuelan Andes for extraterrestrial impact: The black mat enigma. *Geomorphology* 116: 48-57.
- Marlon JR, et al. 2009. Wildfire responses to abrupt climate change in North America. *PNAS* 106: 2519-2524.
- Martin PS. 1967. Prehistoric Overkill. In *Pleistocene Extinctions: The Search for a Cause*, eds. Martin PS, Wright HE, Jr. (Yale University Press, New Haven), pp. 75-120.
- McCabe JR, Boxe CS, Colussi AJ, Hoffmann MR, Thiemens MH. 2005. Oxygen isotopic fractionation in the photochemistry of nitrate in water and ice. *J. Geophysical Research* 110: D15310.
- McCracken KG, Smart DF, Shea MA, Dreschhoff AM. 2001a. 400 years of large fluence solar proton events. *Conf. Pap. Int. Cosmic Ray Conf.* 8: 3209-3212.
- McCracken KG, Dreschhoff GAM, Zeller EJ, Smart DF, Shea MA. 2001b. Solar cosmic ray events for the period 1561 - 1994. 1. Identification in polar ice, 1561 - 1950. *J. Geophys. Res.* 106: 21,585-21,598.
- McManus JF, Francois R, Gherardi J-ML, Keigwin D, Brown-Leger S. 2004. Collapse and rapid resumption of Atlantic meridional circulation linked to deglacial climate changes. *Nature* 428:834-837.
- Mehring PJ, Jr. 1967. The environment of extinction of the Late Pleistocene megafauna in the arid southwestern United States. In *Pleistocene Extinctions: The Search for a Cause*, eds. Martin PS, Wright HE, Jr. (Yale University Press, New Haven), pp. 247-266.
- Melott AL, Thomas BC, Dreschhoff G, Johnson CK. 2010. Cometary airbursts and atmospheric chemistry: Tunguska and a candidate Younger Dryas event. *Geology* 38: 355-358.
- Meltzer DJ, Mead JI. 1985. Dating late Pleistocene extinctions: theoretical issues, analytical bias, and substantive results. in *Environment and Extinction: Man in Late Glacial North America*, eds. Mead J and Meltzer D (Center for the Study of Early Man, University of Maine, Orono, Maine), pp. 145-173.
- Meltzer, DJ. 2004. Peopling of North America. in *The Quaternary Period in the United States*. eds. Gillespie AR, Porter SC, and Atwater BF. Elsevier, Amsterdam), pp. 539-563.
- Miller WE. 1987. Mammut Americanum: Utah's first record of the American mastodon. *Journal of Paleontology* 61:168-183.
- Mueller G, Hirsch GW. 1970. Glassy particles in lunar fines. *Nature* 228: 254-258.

- Muscheler R, Beer J, Wagner G, Finkel RC. 2000. Changes in deep-water formation during the Younger Dryas cold period inferred from a comparison of ^{10}Be and ^{14}C records. *Nature* 408:567-570.
- Napier, WM. 2010. Paleolithic extinctions and the Taurid complex. *MNRAS* 405: 1901-1906.
- Paquay FS, et al. 2009. Absence of geochemical evidence for an impact event at the Bölling-Alleröd/Younger Dryas transition. *PNAS* 106(51): 21505-21510.
- Parkin DW. 1964. Cosmic dust in the ice. *British Antarctic Survey Bulletin* 3: 23-27.
- Parkin DW, Sullivan RAL, Andrews J.N. 1977. Cosmic spherules as rounded bodies in space. *Nature* 266: 515-517.
- Pinter N, Ishman SE. 2008. Impacts, mega-tsunami, and other extraordinary claims. *GSA Today* 18: 37-38.
- Ram M, Stolz M, Koenig G. 1997. Eleven year cycle of dust concentration variability observed in the dust profile of the GISP2 Ice core from Central Greenland: Possible solar cycle connection. *Geophys. Res. Lett.* 24: 2359-2362.
- Ram M, Stolz M. 1999. Possible solar influences on the dust profile of the GISP2 ice core from Central Greenland. *Geophys. Res. Lett.* 26: 1043-1046.
- Rasmussen SO, Seierstad IK, Andersen KK, Bigler M, Dahl-Jensen D, Johnsen SJ. 2008 Synchronization of the NGRIP, GRIP, and GISP2 ice cores across MIS 2 and palaeoclimatic implications. *Quaternary Science Reviews* 27: 18-28.
- Reid GC, Isaksen ISA, Holzer TE, Crutzen PJ. 1976. Influence of ancient solar-proton events on the evolution of life. *Nature* 259: 177-179.
- Rietmeijer FJM. 2006. In *Natural Fullerenes and Related Structures of Elemental Carbon*, vol. 6. ed. Rietmeijer FJM (Springer, Netherlands), pp 123-144.
- Schaefer BE, King JR, Deliyannis CP. 2000. Superflares on ordinary solar-type stars. *Astrophysical Journal* 529:1026-1030.
- Scott AC, et al. 2010. Fungus, not comet or catastrophe, accounts for carbonaceous spherules in the Younger Dryas "impact layer". *Geophysical Research Letters* **37**: L14302-L14307.
- Senatorov VN. 2000. On the possible existence of radiation dust belts in near-Earth space. *Cosmic Research* 38: 612-615.
- Shumilov OI, Kasatkina EA, Henriksen K, Vashenyuk EV. 1996. Enhancement of stratospheric aerosols after solar proton event. *Ann. Geophysicae* 14: 1119-1123.
- Shukla PK. 2001. A survey of dusty plasma physics. *Physics of Plasmas* **8**: 1791-1803.
- Sickafoose AA, et al. 2000. Photoelectric charging of dust particles in vacuum. *Phys. Rev. Lett.* **84**: 6034-6037.
- Skeels MA. 2002. The mastodons and mammoths of Michigan. *Michigan Academician* **34**: 254.
- Slaughter BH. 1967. Animal ranges as a clue to Late-Pleistocene extinction. In *Pleistocene Extinctions: The Search for a Cause*, eds. Martin PS, Wright HE, Jr. (Yale University Press, New Haven), pp. 155-167.
- Steffensen JP, et al. 2008. High-resolution Greenland ice core data show abrupt climate change happens in few years. *Science* 321: 680-684.
- Stich A, et al. 2008. Soot as evidence for widespread fires at the Younger Dryas onset (YDB; 12.9 ka). Amer. Geophys. Union fall meeting, abstract #PP13C-1471.

- Stocker TF, Wright DG. 1996. Rapid changes in ocean circulation and atmospheric radiocarbon. *Paleoceanography* 11: 773-795.
- Stuiver M, Kra RS. 1986. High-precision calibration of the radiocarbon time scale, AD. 1950-500 BC. *Radiocarbon* 28: 805-838.
- Stuiver M, Grootes PM. 2000. GISP2 oxygen isotope ratios. *Quaternary Research* 53: 277-284.
- Surovell TA, et al. 2009. An independent evaluation of the Younger Dryas extraterrestrial impact hypothesis. *PNAS* 106(43): 18155-18158.
- Taylor KC, Hammer CU, Alley RB, Clausen HB, Dahl-Jensen D, Gow AJ, Gundestrup NS, Kipfstuh J, Moore JC, Waddington ED. 1993. Electrical conductivity measurements from the GISP2 and GRIP Greenland ice cores. *Nature* 366: 549-552.
- Taylor KC, Mayewski PA, Twickler MS, Whitlow SI. 1996. Biomass burning recorded in the GISP2 ice core: A record from eastern Canada? *The Holocene* 6(1):1-6.
- Tian H, Schryvers D, Claeys Ph. 2011. Nanodiamonds do not provide unique evidence for a Younger Dryas impact. *Proc. Nat. Acad. Sci.* **108**: 40-44.
- Tverskoi BA. 1967. *Soviet Astronomy* 10:1031-1033.
- Usoskin IG, Solanki SK, Kovaltsov GA, Beer J, Kromer B. 2006. Solar proton events in cosmogenic isotope data. *Geophys. Res. Lett.* 33(8):L08107.
- Vereshchagin NK. 1967. Primitive hunters and Pleistocene extinction in the Soviet Union. In *Pleistocene Extinctions: The Search for a Cause*, eds. Martin PS, Wright HE, Jr. (Yale University Press, New Haven), pp. 365-398.
- Wagner G, et al. 2001. Presence of the solar deVries cycle (~205 years) during the last ice age. *Geophys. Res. Lett.* 28: 303-306.
- Waters MR, Stafford TW, jr. 2007. Redefining the Age of Clovis: Implications for the peopling of the Americas. *Science* 315: 1122-1126.
- Wolff EW. 1995. Nitrate in Polar Ice (Springer-Verlag, New York), vol. 130.
- Yang Q, Mayewski PA, Whitlow SI, Twickler MS, Morrison MC, Talbot RW, Dibb JE, Linder E. 1995. Global perspective of nitrate flux in ice cores. *J. Geophys. Res.* 100: 5113-5121.
- Zeller, EJ., Dreschhoff, GAM. 1995. Anomalous nitrate concentrations in polar ice cores — do they result from solar particle injections into the polar atmosphere? *Geophys. Res. Lett.* 22: 2521-2524.
- Zook HA, Hartung JB, Storzer D. 1977. Solar flare activity: Evidence for large-scale changes in the past. *Icarus* 32:106-126.
- Zook HA. 1980. On lunar evidence for a possible large increase in solar flare activity ~2x10⁴ years ago. In *Proc. Conf. Ancient Sun*, eds. Peppin R, Eddy J, Merrill R, pp. 245–266.